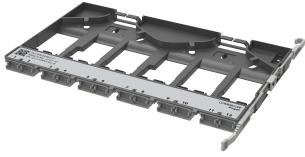


# 760252374 | PPL-AP-12-MPO-ALL-B



## Propel pass-through adapter pack, 12 MPO8-12-24 ports, Type B

- Can be installed and removed from front or rear of panel
- For use with MPO8, MPO12 or MPO24 applications
- All adapter pack sizes are interchangeable within Propel panels or blades
- This component requires 6 of the 12 lanes on the Propel Panel blade

## Product Classification

<b>Regional Availability</b>	Asia   Australia/New Zealand   EMEA   Latin America   North America
<b>Portfolio</b>	SYSTIMAX®
<b>Product Type</b>	Fiber adapter pack
<b>Product Brand</b>	Propel
<b>Product Series</b>	PPL

## General Specifications

<b>Adapter Color</b>	Gray
<b>Interface</b>	MPO
<b>Interface Feature</b>	Dust caps   Internal shutters   Key up
<b>Total Ports, quantity</b>	12

## Dimensions

<b>Height</b>	11 mm   0.433 in
<b>Width</b>	196 mm   7.717 in
<b>Depth</b>	170 mm   6.693 in

## Optical Specifications

<b>Fiber Mode</b>	Multimode   Singlemode
-------------------	------------------------

## Environmental Specifications

<b>Safety Standard</b>	UL 62368
------------------------	----------

## Packaging and Weights

<b>Packaging quantity</b>	1
---------------------------	---

## Regulatory Compliance/Certifications

<b>Agency</b>	<b>Classification</b>
CHINA-ROHS	Below maximum concentration value
REACH-SVHC	Compliant as per SVHC revision on <a href="http://www.commscope.com/ProductCompliance">www.commscope.com/ProductCompliance</a>
ROHS	Compliant
UK-ROHS	Compliant

