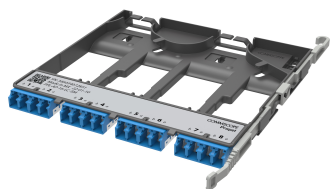


760252365 | PPL-AP-16-LC-SM



Propel pass-through adapter pack, singlemode, 8 duplex LC/UPC ports

- Can be installed and removed from front or rear of panel
- QR code provides easy access to product documentation
- 8f, 12f, 16f or 24f sizes are interchangeable within Propel panels or blades
- This component requires 4 of the 12 lanes on the Propel Panel blade

Product Classification

Regional Availability	Asia Australia/New Zealand EMEA Latin America North America
Portfolio	SYSTIMAX®
Product Type	Fiber adapter pack
Product Brand	Propel
Product Series	PPL

General Specifications

Adapter Color	Blue
Interface	LC/UPC
Interface Feature	Dust caps Internal shutters
Total Ports, quantity	8

Dimensions

Height	11 mm 0.433 in
Width	131 mm 5.157 in
Depth	170 mm 6.693 in

Optical Specifications

Fiber Mode	Singlemode
-------------------	------------

Environmental Specifications

Safety Standard	UL 62368
------------------------	----------

Packaging and Weights

Packaging quantity	1
---------------------------	---

Regulatory Compliance/Certifications

Agency**Classification**

CHINA-ROHS

Below maximum concentration value

REACH-SVHC

Compliant as per SVHC revision on www.commscope.com/ProductCompliance

ROHS

Compliant

UK-ROHS

Compliant

