



FOCIS Lightning™

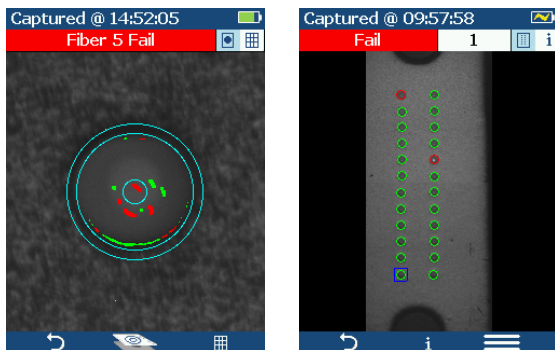
Ultrafast MPO/MTP® Multi-fiber Connector Inspection

FOCIS Lightning is a self-contained inspection probe that captures the entire MPO end-face image in less than two seconds from power-on. One button provides auto-focusing, centering and pass / fail analysis at the connector and individual fiber level. It can complete a 24-fiber MPO inspection task in less than 15 seconds. Results can be easily shared via USB, WiFi and Bluetooth®.

FOCIS Lightning supports all MPO fiber configurations including Base-8 and Base-10 with key up/key down polarity capture. It can also be used for single-fiber inspection with optional coupler and tips. FOCIS Lightning recently won "Best in Show" at the 2019 BICSI Winter Conference & Exhibition and was rated "superb" by the 2019 Lightwave Innovation Reviews.

Specifications

- Field of View (Live): 1960 x 4670 µm
- Field of View (per fiber): 130 x 130 µm
- Display: 2.4" color LCD, 320 x 240, 3 zoom levels
- Pass/Fail Analysis: IEC 61300-3-35, IPC, user
- File Formats: 640 x 480 pixel JPG & GIF
- Storage Capacity: 10,000 images & results
- Battery: 8 hours, rechargeable NiMH



FOCIS Lightning focuses, captures and analyzes all fibers in the MPO/MPT end-face with a click of a button.



Contact sales@AFLglobal.com